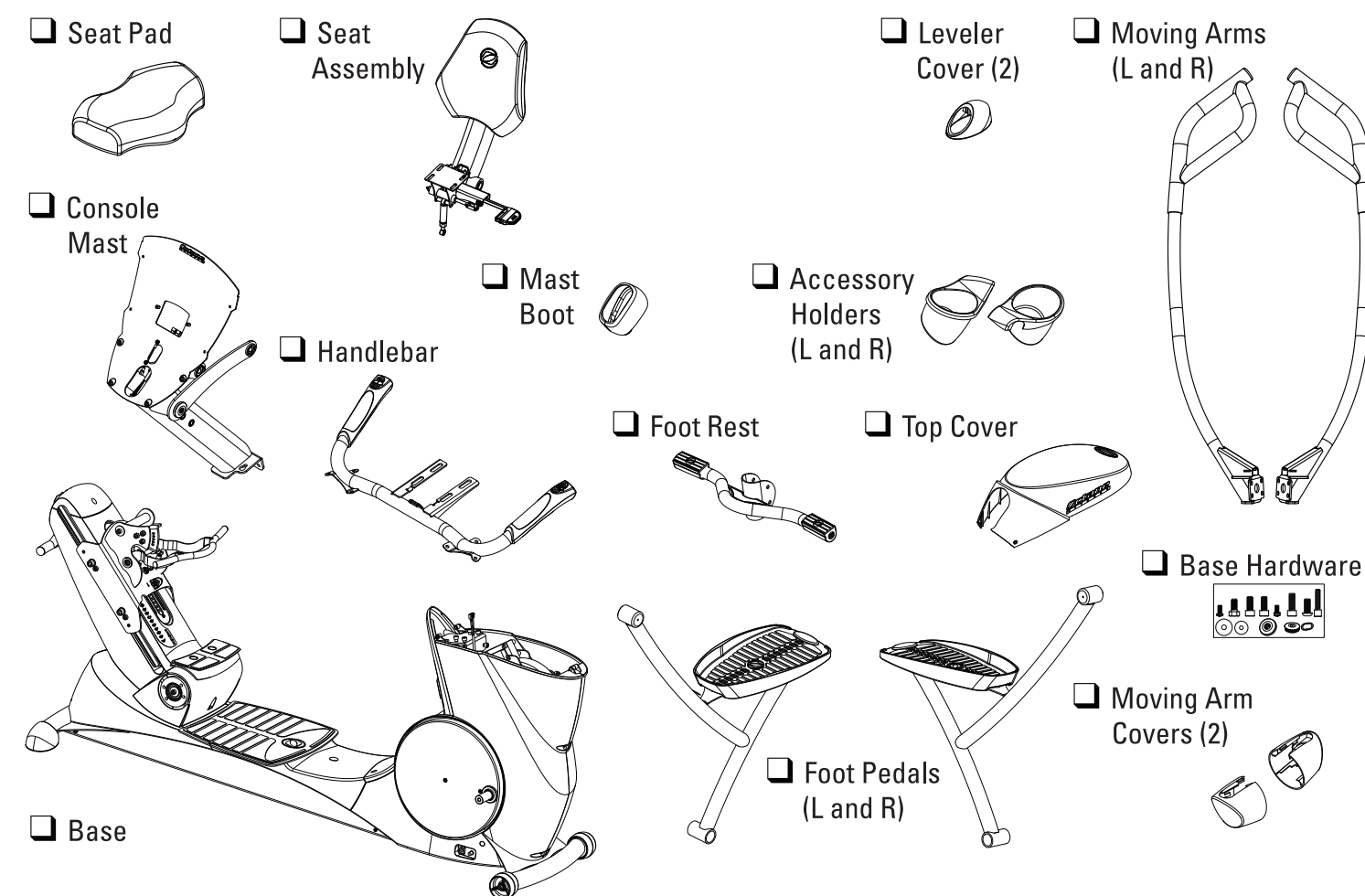
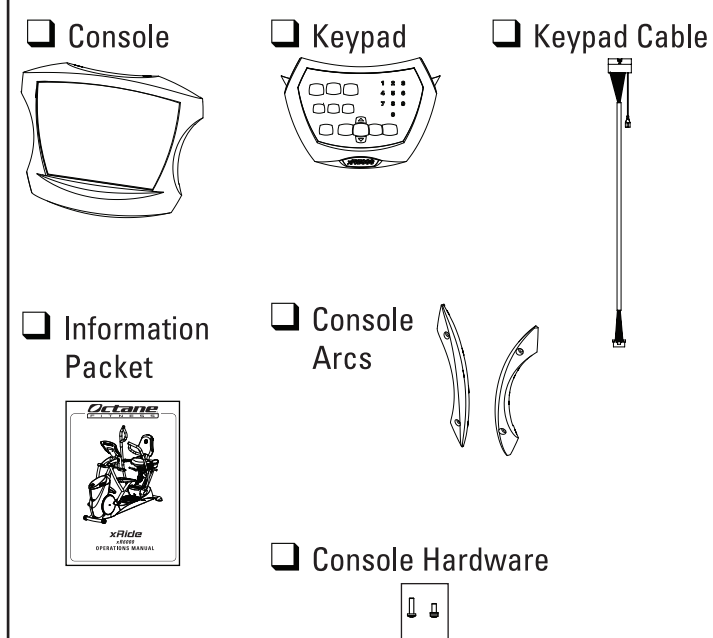


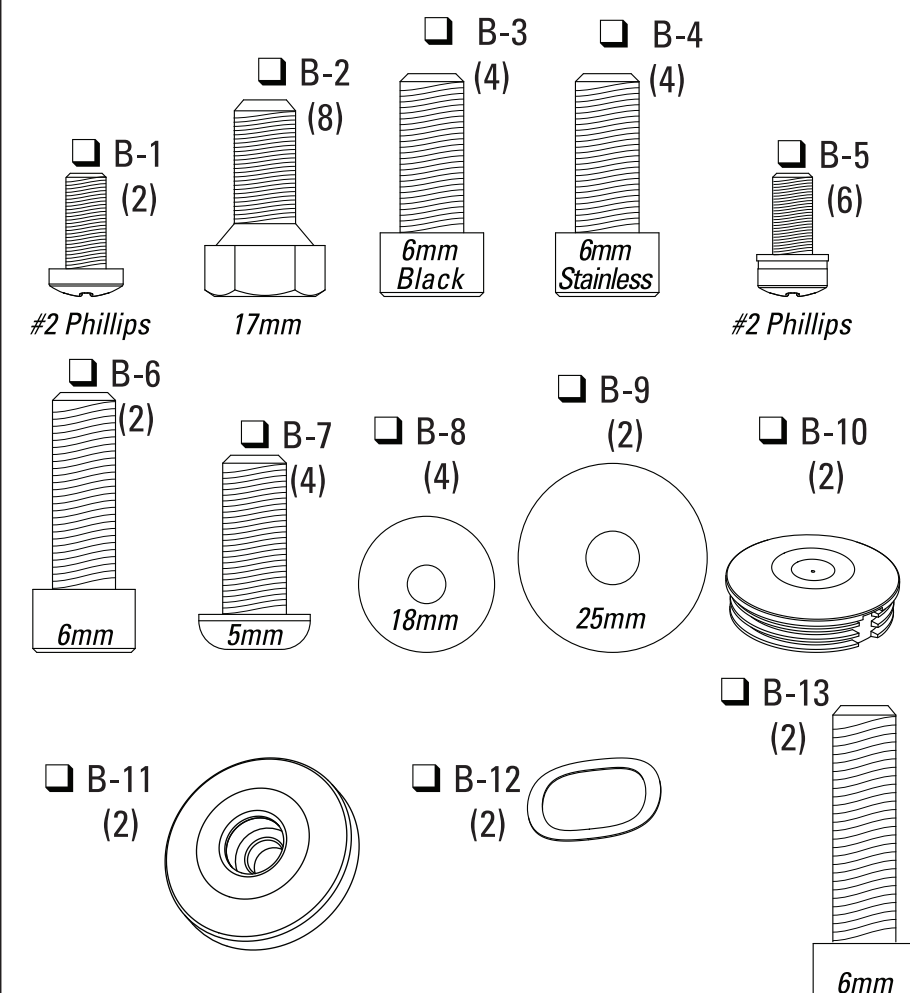
## Base Box



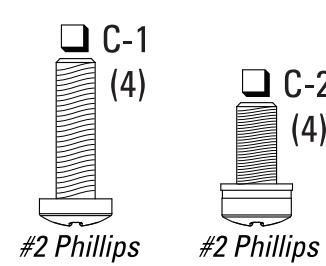
## Console Box



## Base Hardware

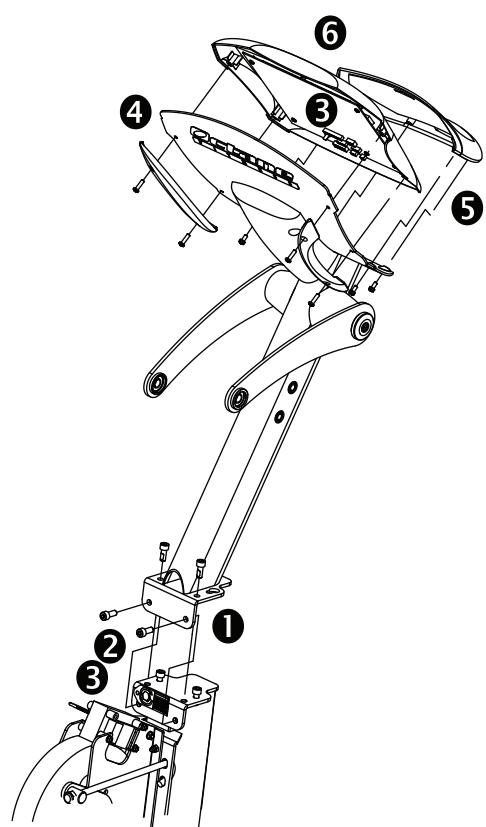


## Console Hardware



**A**

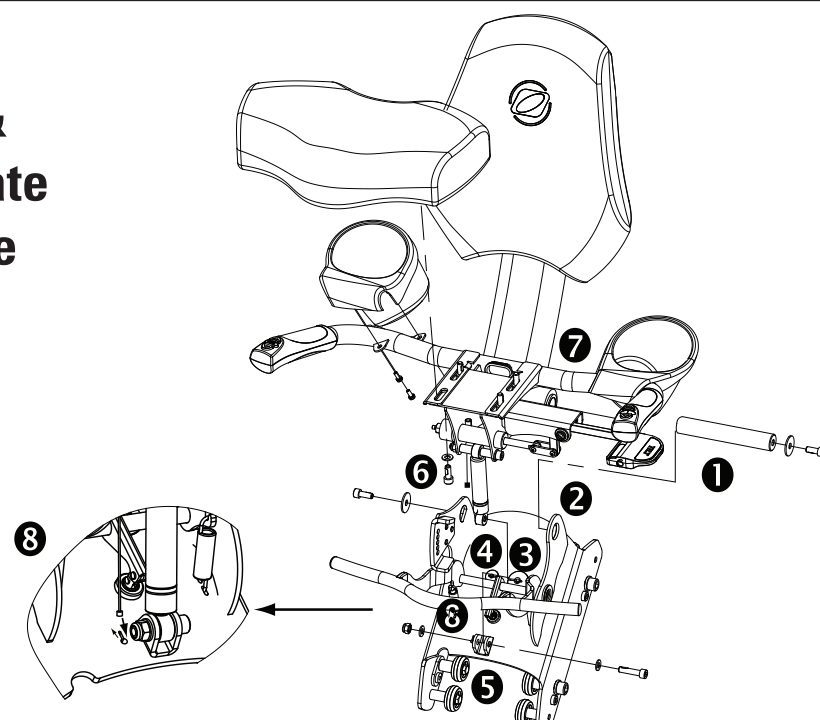
### Console & Keypad



- Slide mast over screws on base; insert B-3 (Qty 4 black zinc); tighten all 6 screws (30 ft-lb).
- Connect cable (mast to base).
- Connect heart rate cable in mast to base and console.
- Connect cable (mast to console); attach console and arcs to mast with C-1 (Qty 4).
- Connect keypad ribbon cable; attach keypad with C-2 (Qty 4).
- Remove protective films.

**B**

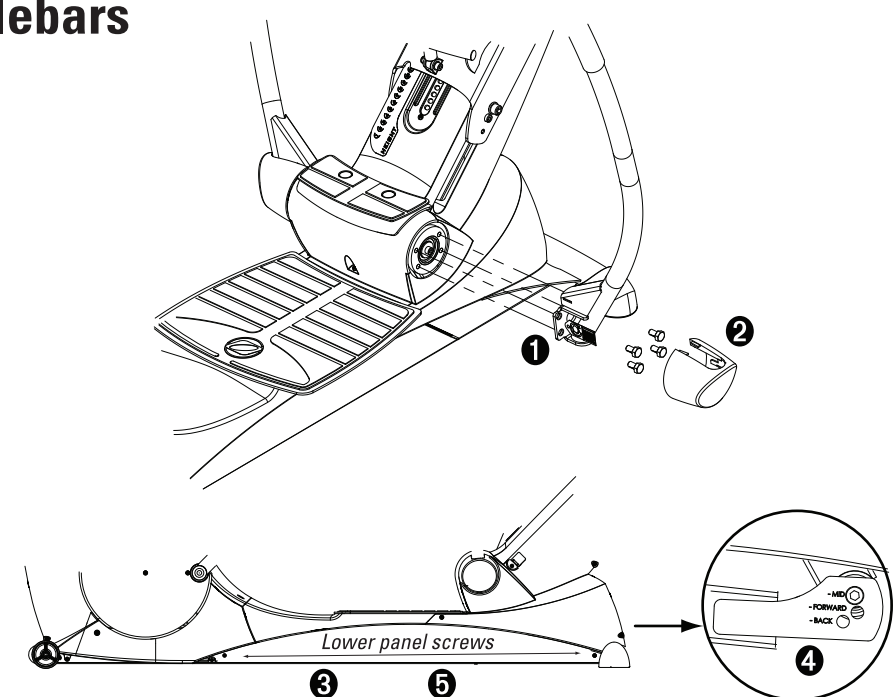
### Seat & Heart Rate Module



- Remove seat axle from carriage (slides out left side of unit).
- Lift tilt handle; slide seat assembly onto carriage; re-insert axle and tighten (17 ft-lb).
- Lay handlebar across seat assembly; connect 2 heart rate cables (seat tube to base & seat tube to handlebar).
- Connect control button cables (seat handles to base).
- Attach lower end of damper to base.
- Attach handlebar & seat pad with B-4 & B-8 (Qty 4).
- Attach accessory holders with B-5 (Qty 6).
- Tilt seat forward; insert tilt cable in hole and slide up.

**C**

### Moving Handlebars



- Attach moving handlebar at hub with B-2 (Qty 4); tighten to 30 ft-lb.
- Slide cover over handlebar base.

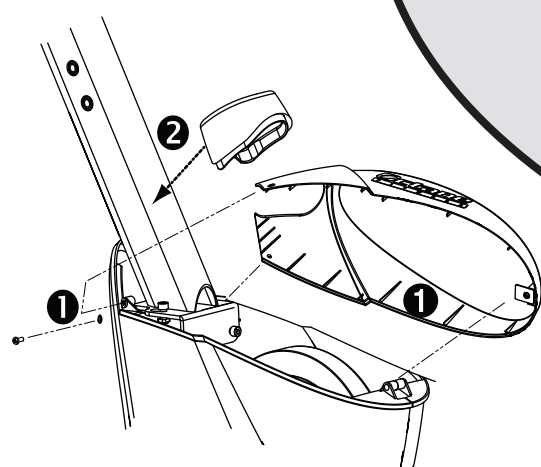
*OPTIONAL—Adjust moving handlebar for 1" longer or shorter reach:*

- Remove lower panel.
- Hold handlebar**, remove and reposition bolt.
- Replace lower panel.

**Settings on both handlebars must match.**

**D**

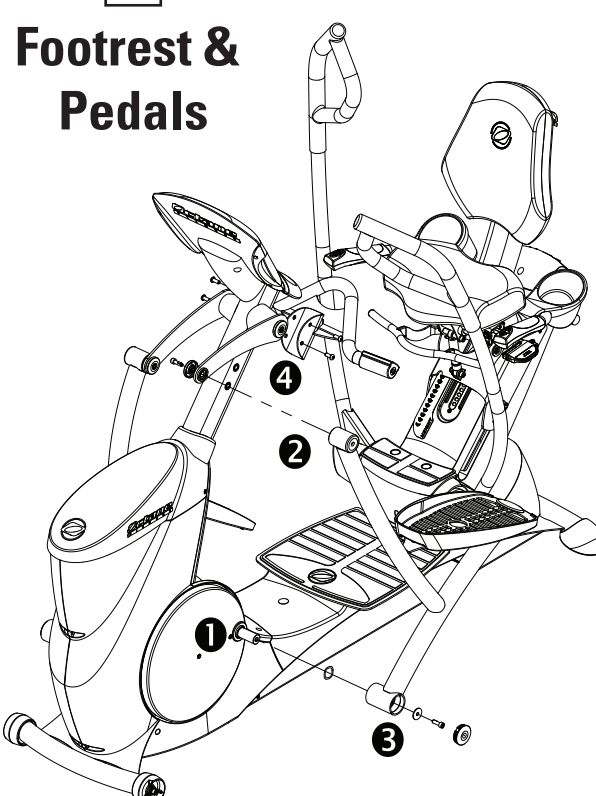
### Top Cover & Mast Boot



- Attach top cover with B-1 (Qty 2).
- Wrap mast boot around mast.

**E**

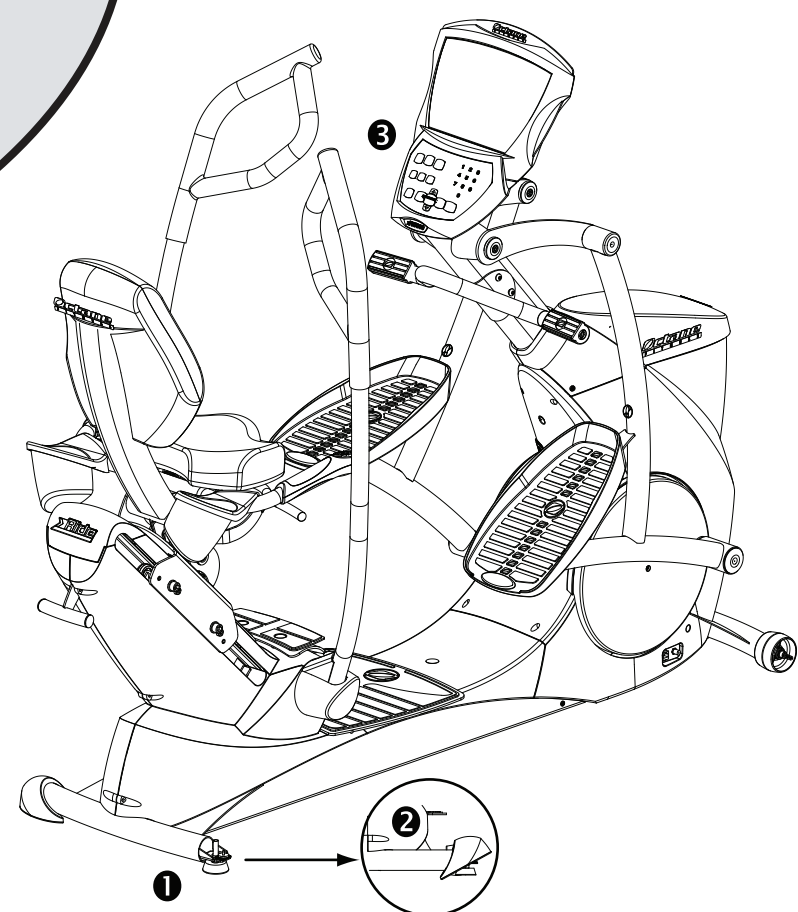
### Footrest & Pedals



- Slide B-12 (Qty 1) and lower end of pedal onto crank axle.
- Attach upper pedal hub with B-13 and B11 (Qty 1).
- Attach lower hub with B-6 and B-9 (Qty 1). Press B-10 in hub.
- Attach foot rest bracket to mast with B-7 (Qty 4).

**F**

### Level Unit



- Adjust and lock levelers; **make sure nut is tight.**
- Press leveler caps over stabilizer bar.
- Set User Settings (Level ▲/▼) — See Operations Manual